



# Priority Parks Program – Project Update

---

PACIFICA PARKS, BEACHES &  
RECREATION COMMISSION

MARCH 25<sup>TH</sup>, 2026

## Background

Community-driven initiative to revitalize parks with fewer past investments.



Includes Brighton, Imperial, Marvilla, and Skyridge Parks.



Focused on safety, accessibility, and usability.

## Project Overview

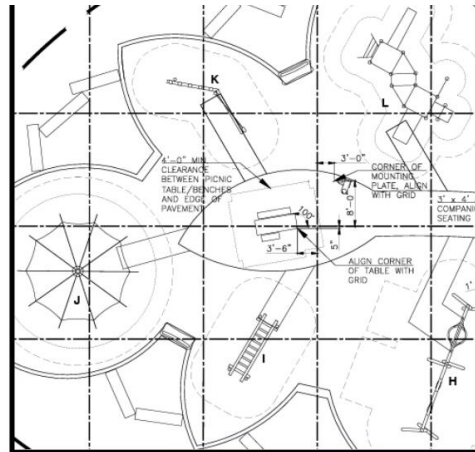
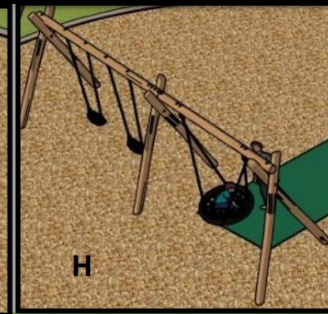
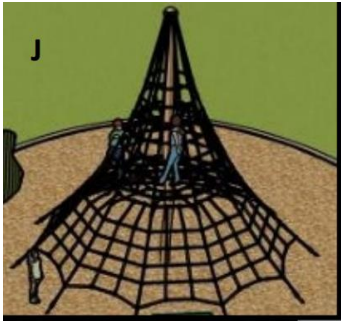
Projects coordinated  
with Public Works.

Part of Capital  
Improvement Program.

Phased construction  
throughout 2026.

# Imperial Park

## IMPERIAL PARK



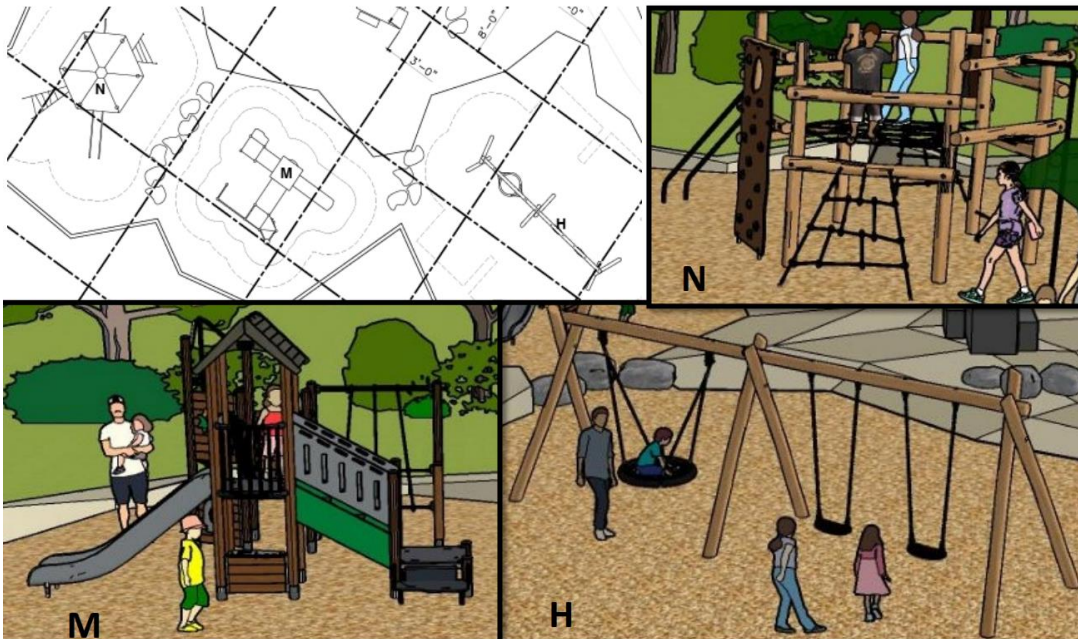
**Closure:** Early April 2026

**Completion:** July–August 2026

**Grand Opening:** Late August 2026

# Skyridge Park

## SKYRIDGE PARK

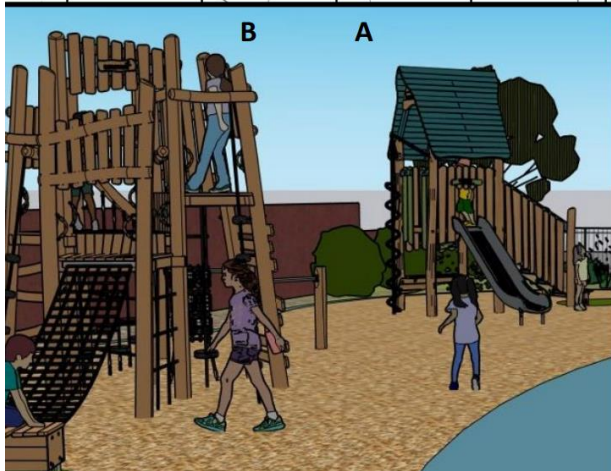
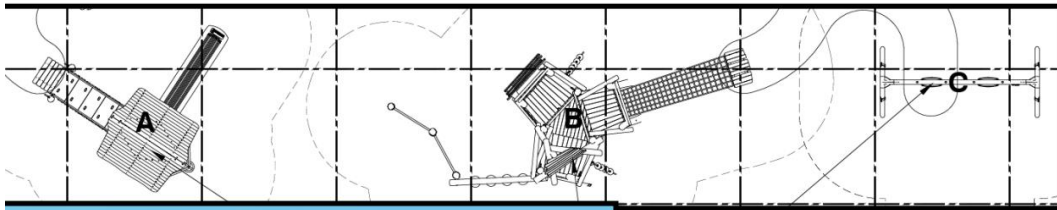


**Closure:** Late April 2026

**Completion:** Early August 2026

**Grand Opening:** Late August 2026

## BRIGHTON PARK



# Brighton Park

**Closure:** Late June 2026

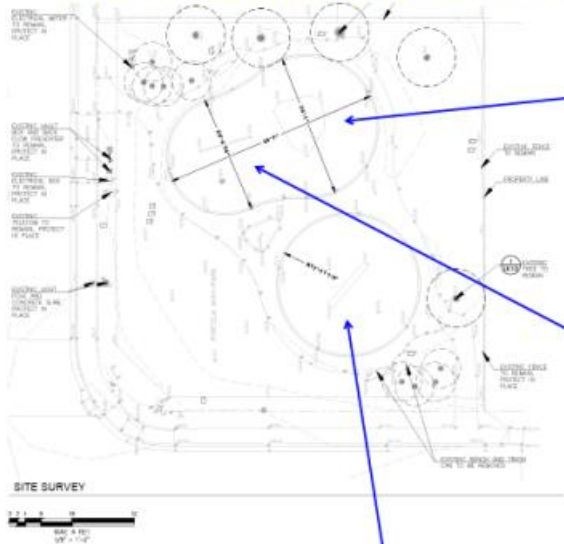
**Completion:** September 2026

**Grand Opening:** Late Sept/Early Oct 2026

Delayed due to equipment delivery.

# MARVILLA PARK (add alternate)

## Option 1: Custom Equipment- All Ages (5-12 yr)



Spring Board x3  
(NRO104)



Net Climbing  
(KRS8201241)



Climbing Arrangement  
(KRS8200484)

# Marvilla Park

**Closure:** Late July 2026

**Completion:** September 2026

**Grand Opening:** Late Sept/Early Oct 2026

Delayed due to equipment delivery.

# Communication Plan / Next Steps

---

Ongoing updates to residents.

Notifications before closures.

Grand opening celebrations planning.



Thank You &  
Questions