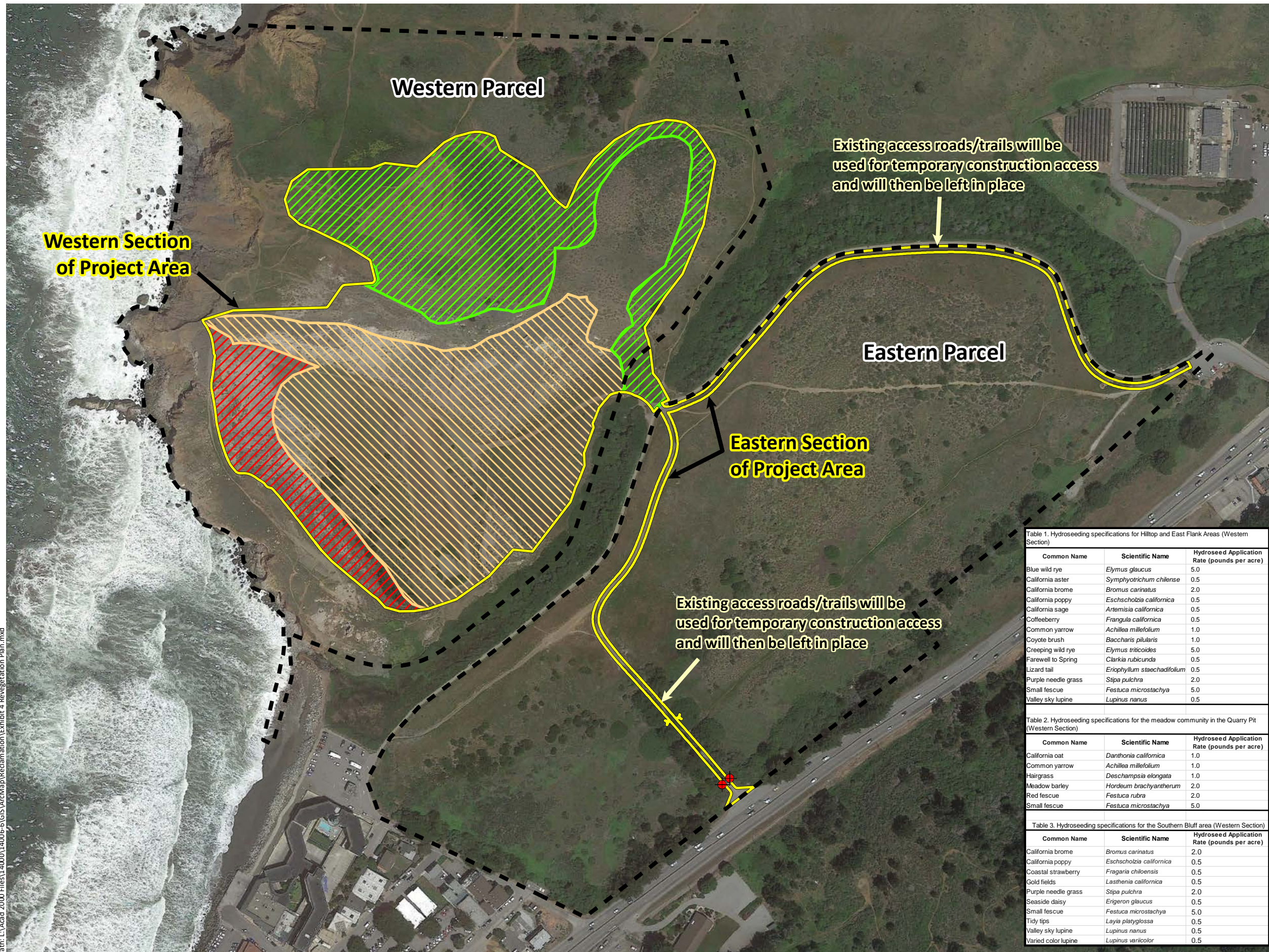


**Exhibit 4**  
Revegetation Plan

# Exhibit 4. Revegetation Plan

Reclamation Plan  
Rockaway Quarry Reclamation Project  
Pacifica, San Mateo County, California



- Property Boundary - 86.20 ac.
- Reclamation Area - 25.97 ac.
- Culverts

## Revegetation Plan - 21.79 ac.

- Hilltop and East Flank - 7.25 ac.
- Quarry Pit - 11.33 ac.
- Southern Bluff - 2.46 ac.

Table 1. Hydroseeding specifications for Hilltop and East Flank Areas (Western Section)

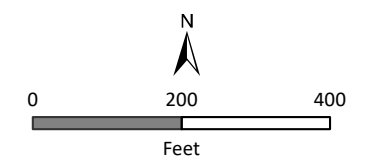
Common Name	Scientific Name	Hydroseed Application Rate (pounds per acre)
Blue wild rye	<i>Elymus glaucus</i>	5.0
California aster	<i>Symphotrichum chilense</i>	0.5
California brome	<i>Bromus carinatus</i>	2.0
California poppy	<i>Eschscholzia californica</i>	0.5
California sage	<i>Artemisia californica</i>	0.5
Coffeeberry	<i>Frangula californica</i>	0.5
Common yarrow	<i>Achillea millefolium</i>	1.0
Coyote brush	<i>Baccharis pilularis</i>	1.0
Creeping wild rye	<i>Elymus triccoides</i>	5.0
Farewell to Spring	<i>Clarkia rubicunda</i>	0.5
Lizard tail	<i>Eriophyllum staechadifolium</i>	0.5
Purple needle grass	<i>Stipa pulchra</i>	2.0
Small fescue	<i>Festuca microstachya</i>	5.0
Valley sky lupine	<i>Lupinus nanus</i>	0.5

Table 2. Hydroseeding specifications for the meadow community in the Quarry Pit (Western Section)

Common Name	Scientific Name	Hydroseed Application Rate (pounds per acre)
California oat	<i>Danthonia californica</i>	1.0
Common yarrow	<i>Achillea millefolium</i>	1.0
Hairgrass	<i>Deschampsia elongata</i>	1.0
Meadow barley	<i>Hordeum brachyantherum</i>	2.0
Red fescue	<i>Festuca rubra</i>	2.0
Small fescue	<i>Festuca microstachya</i>	5.0

Table 3. Hydroseeding specifications for the Southern Bluff area (Western Section)

Common Name	Scientific Name	Hydroseed Application Rate (pounds per acre)
California brome	<i>Bromus carinatus</i>	2.0
California poppy	<i>Eschscholzia californica</i>	0.5
Coastal strawberry	<i>Fragaria chiloensis</i>	0.5
Gold fields	<i>Lasthenia californica</i>	0.5
Purple needle grass	<i>Stipa pulchra</i>	2.0
Seaside daisy	<i>Erigeron glaucus</i>	0.5
Small fescue	<i>Festuca microstachya</i>	5.0
Tidy tips	<i>Layia platyglossa</i>	0.5
Valley sky lupine	<i>Lupinus nanus</i>	0.5
Varied color lupine	<i>Lupinus varicolor</i>	0.5



Path: L:\Acad 2000 Files\14000\14006-6\GIS\ArcMap\Reclamation\Exhibit 4 Revegetation Plan.mxd

