



TRAFFIC ADVISORY

Date: December 4, 2017
District: 4 - Oakland
Contact: Jeff Weiss
Office Phone: 510-286-5543

State Route 1-Tom Lantos (Devils Slide) Tunnel Emergency Response Drill

Overnight Tunnel Closure

Friday, December 15 at 10:00 PM – Saturday, December 16, 4:00 AM

SAN MATEO COUNTY – Caltrans will conduct its fourth annual mandatory emergency response drill at the State Route 1 (SR-1)-Tom Lantos (Devil's Slide) Tunnel.

The mandatory six-hour emergency response drill begins Friday, December 15 at 10:00 PM and concludes Saturday, December 16 at 4:00 AM.

The exercise will take place either rain or shine.

For the safety of crews and the public, all northbound and southbound lanes on SR-1 through the tunnel will be closed during the exercise.

Lantos Tunnel-Detour Routes:

During the tunnel closures, the following detours between Pacifica and Half Moon Bay will be in effect. The California Highway Patrol (CHP) will also help direct motorists:

From Pacifica: North on SR-1 to southbound on Interstate-280 (I-280)

From Half Moon Bay: East on State Route 92 onto northbound I-280

The emergency management exercise will be a coordinated effort including the CHP, San Mateo County Sheriff's Office, Pacifica Fire and Police Departments, California Office of Emergency Services, Cal-Fire, and other first responders.

During this exercise, there will be fire simulation, crash simulation, and simulated smoke. Changeable Message Signs will activate December 4, 2017.

-MORE-



TRAFFIC ADVISORY

State Route 1-Tom Lantos Tunnels-San Mateo County



Normal traffic exiting State Route 1-Tom Lantos Tunnels between Pacifica and Half Moon Bay in San Mateo County. (File Photo, courtesy of Caltrans)

Emergency Response Drill



Fire crews responding to a mock accident inside the Lantos Tunnels during emergency response exercise. (File Photo courtesy of Caltrans, from December 2014)

-MORE-



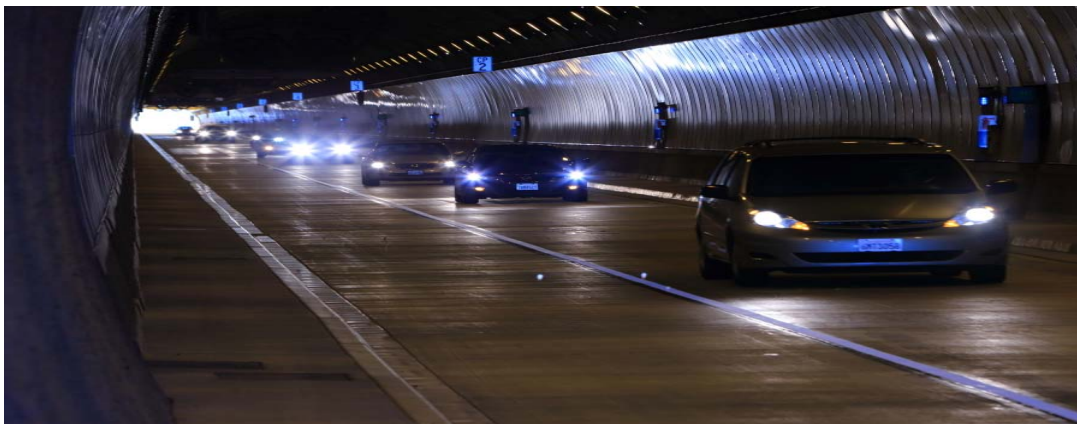
TRAFFIC ADVISORY

Joint Response Exercise



Caltrans crews working alongside Pacifica, and Coastside Fire Departments, CHP and other area agencies during emergency response exercise. (File photo courtesy of Caltrans, from December 2014)

Northbound and Southbound Traffic in Lantos Tunnel



Traffic on a normal day through the Lantos Tunnels. All northbound and southbound traffic lanes through the tunnel will be closed during the emergency response drill starting this Friday, December 15, 2015 at 10:00 PM. (File photo courtesy of Caltrans)

BE WORK ZONE ALERT

